

Delaware Libraries : Construction

New Castle County



**Appoquinimink/
Southern Regional**
September 2007
SF 10,000



Bear
January 2013
\$state: 4,052,250
SF 25,000



Brandywine
April 2003
\$state: 4,422,900
SF 40,000



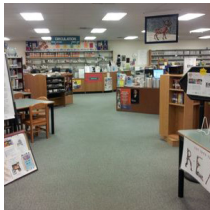
Claymont
October 2013
\$state: 5,009,357
SF 17,500



Corbit-Calloway
1997
\$state: 13,200
SF 6,100



Delaware City
September 2003
\$state: 1,675,000
SF 13,000



Elsmere
SF 7,000



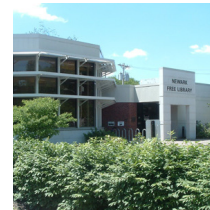
Hockessin
April 2008
\$state: 4,001,100
SF 23,000



Kirkwood
August 2008
\$state: 3,580,700
SF 22,500



New Castle
March 2010
\$state: 3,308,800
SF 23,000



Newark
2003
\$state: 2,235,900
SF 26,500



N. Wilmington
SF 6,318



Route 9
September 2017
\$state 13,066,000
SF 43,000



Wilmington
January 2014
\$state: 5,063,000
SF 45,592



Woodlawn
September 2006
\$state: 3,038,000
SF 17,600



Dover
September 2012
\$state: 10,976,000
SF 46,000

Kent County



Harrington
\$state:2,600,000
SF 2,000
Proposed SF 18,000



Kent County
2010
\$state: 0
SF 10,000



Milford
November 2010
\$state: 2,291,400
SF 21,940



Smyrna (Duck Creek)
\$state: 4,400,000
SF 4,918
Proposed SF 25,000

Sussex County



Bridgeville
September 2009
\$state: 1,537,000
SF 13,490



Delmar
Dedication April 2019
\$state: 2,800,000
SF 15,000



Frankford
November 2013
\$state: 365,000
SF 6,200



Georgetown
August 2010
\$state: 3,260,000
SF 29,000



Greenwood
June 2014
\$state: 1,875,000
SF 10,400



Laurel
May 2006
\$state: 1,943,500
SF 26,000



Lewes
June 2016
\$state: 6,250,000
SF 28,502



Millsboro
2001
\$state: 485,100
SF 6,000



Milton
2005
\$state: 948,800
SF 16,676



Rehoboth
2000
\$state: 754,000
SF 11,000



Seaford
December 2009
\$state: 3,127,000
SF 16,800



Selbyville
June 2004
\$state: 423,500
SF 5,600



South Coastal
May 2009
\$state: 4,224,400
SF 20,000

Total Libraries SF: 615,634

**Increased/revitalized SF since 2010:
331,752**

Goals:

- 1 SF per capita statewide
- Library minimum 10,000 SF
- Flexible spaces

FY2021 Requests:

- Rehoboth Beach Public Library**
Design & Initial Expansion Construction
FY2021 Request: \$500,000
- Selbyville Public Library**
Renovation Design & Expansion
FY2021 Request: \$3,687,595

In Process:

- Southern Regional Library**
Ground Breaking TBD
Proposed SF: 25,000
State: \$11,002,500
- North Wilmington Public Library**
Needs Assessment & Initial Design
State: \$150,000
- Seaford Public Library**
LED & Solar Panels
State: \$281,415
- Harrington Public Library**
Ground Breaking TBD
Proposed SF: 18,000
State: \$2,600,000
- Duck Creek Library, Smyrna**
Ground Breaking TBD
Proposed SF 25,000
State: \$4,400,000 million

As of October 2019

DelawareLibraries.org

