



# Our Bold Path Forward

*Empowering the community through  
informing, connecting, facilitating,  
inspiring and transforming one  
Delawarean at a time!*



## DelawareLibraries.org





# *Libraries Past and Present*





# Driving Equality



## Access

- WIFI Access
- Technology Access
- Information

## Awareness

- Ask a Librarian
- Navigation and Webinars
- Collaborative Learning Links
- Partner Resources

## Support/Learning

- Mental Health Providers
- Job Training
- Literacy Support
- Health/Wellness



# Addressing Inequalities

*Address inequities and inequalities  
in our communities.*



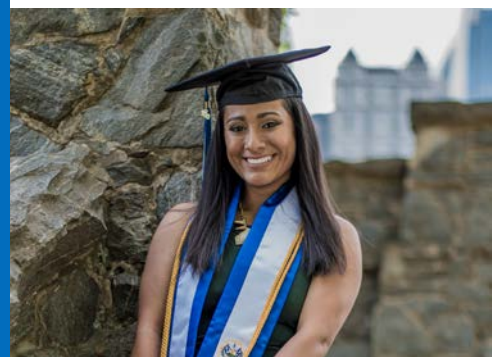
ACCESS &  
RESOURCES



TECHNOLOGY &  
CONNECTIVITY



ACHIEVEMENT &  
ADVANCEMENT

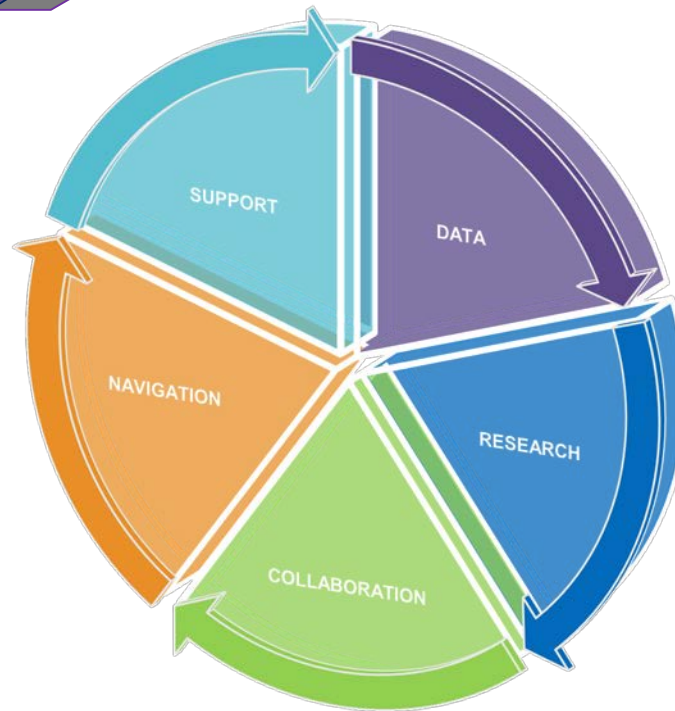


# The Solution

**SUPPORT**  
For the community at large  
and underserved populations

**NAVIGATION**  
For the community  
and those with special needs

**COLLABORATION**  
For a leadership role  
in social infrastructure



**DATA**  
Data and resources

**RESEARCH**  
Best practices and  
pilot initiatives

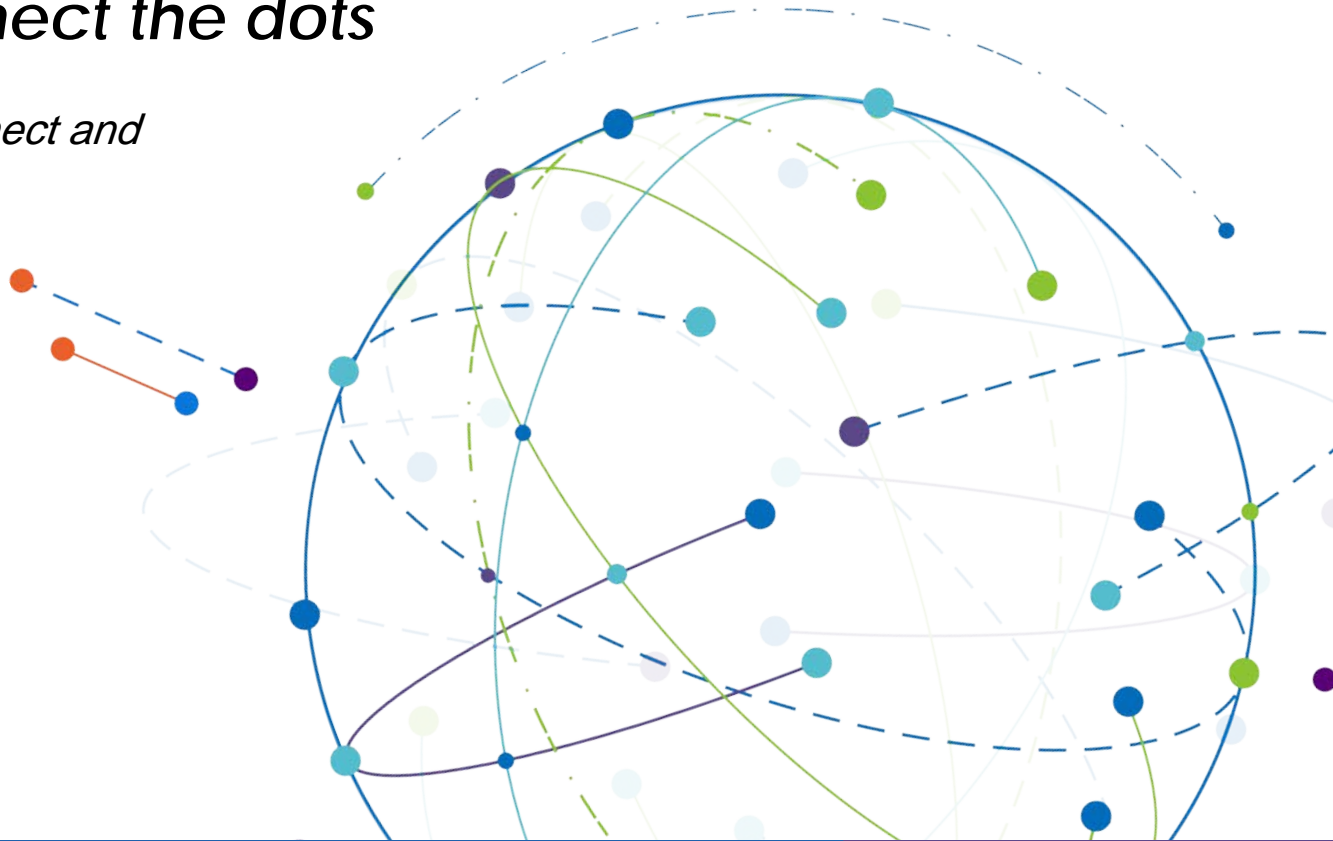




# *First you have to collect the dots so you can connect the dots*

*We identify, convene, connect and  
drive solutions.*

- Leadership
- Team
- Infrastructure
- Access Points
- Connectivity
- Technology





# *Our Bold Path Forward Involves You*



1

RESOURCES



2

AWARENESS



3

COLLABORATION



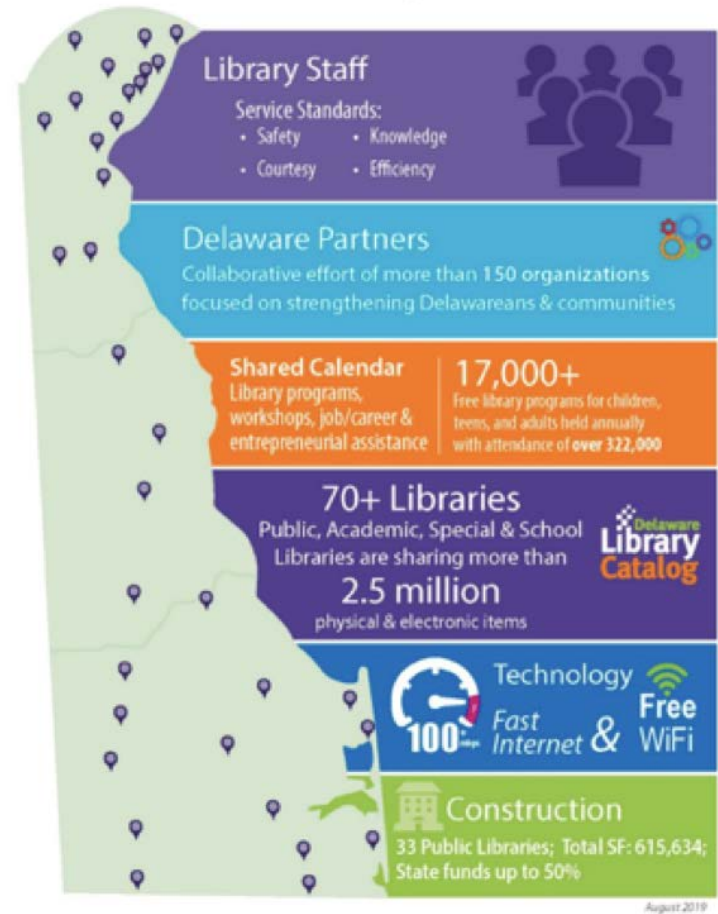
4

ADVOCACY



# The Role We Play

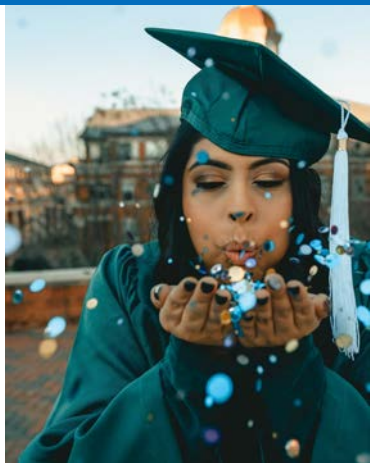
- ***Bold Connections***
- ***Bold Outcomes***
- ***Bold Future***







*Together we impact  
1,000,000 Delawareans*



# DelawareLibraries.org



*Delaware Libraries: enhancing and supporting one person, one family, one community at a time!*

Annie Norman, Ed.D.

State Librarian / Director

Delaware Division of Libraries

[Annie.Norman@delaware.gov](mailto:Annie.Norman@delaware.gov)

302-257-3001

[DelawareLibraries.org](http://DelawareLibraries.org)

[Libraries.delaware.gov](http://Libraries.delaware.gov)

[DelawareLibraries.org](http://DelawareLibraries.org)